

# airox

*Smart Harmony Of  
air & water*

## WBCB TDS

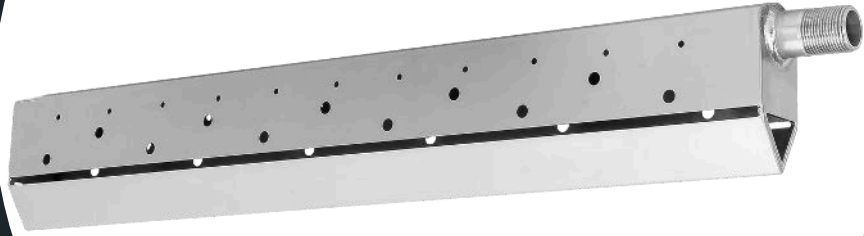
W I D E

B A N D

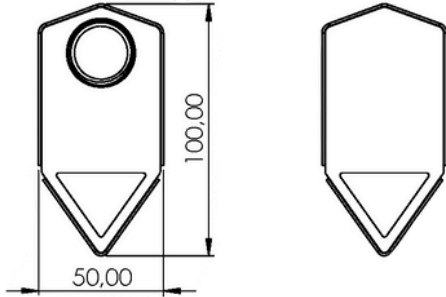
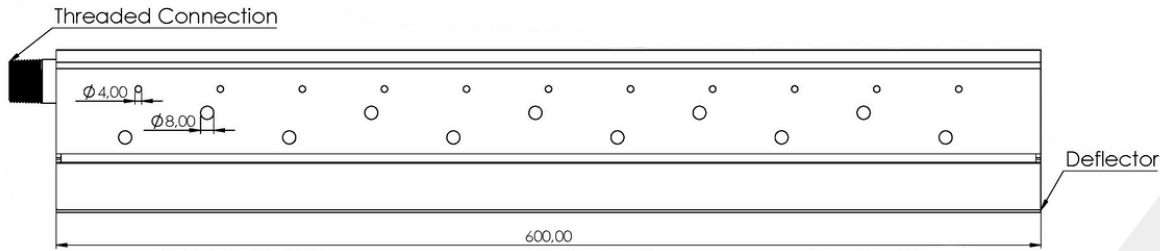
C O A R S E

B U B B L E

W B C B - 6 0 0



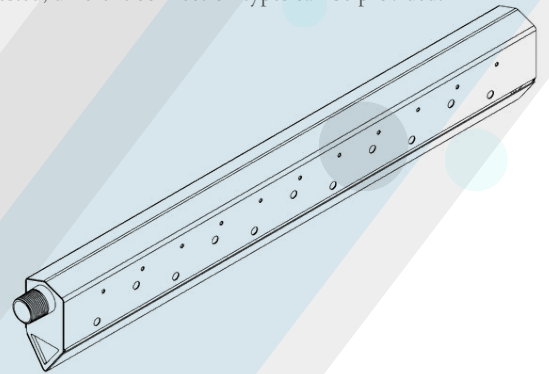
# WIDE BAND COARSE BUBBLE 600 TECHNICAL DATA SHEET



## DIMENSIONS

Total Length	(mm)	600
Thread	(NPT)	1"-3/4" M 1"-3/4" F
Height	(mm)	100
Width	(mm)	50
Weight	(kg)	1,34

\*If requested, different connection types can be provided.



## DIFFUSER

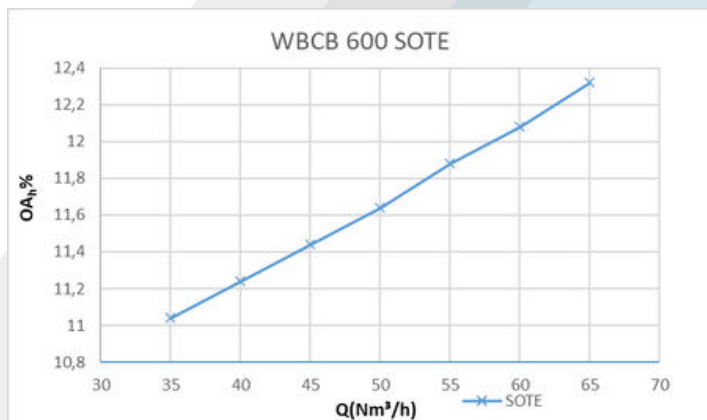
Number of Upper Holes	(qty.)	22
Diameter of Upper Holes	(mm)	8
Number of Lower Holes	(qty.)	22
Diameter of Lower Holes	(mm)	4

\*The number of holes and pattern can be changed upon request.

## PERFORMANCE

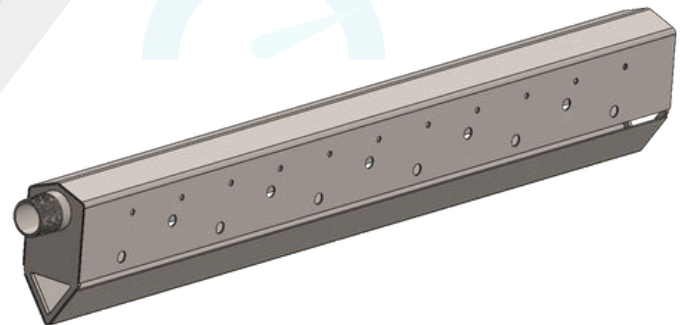
Type	Minimum Airflow Rate (Nm <sup>3</sup> /h)	Nominal Airflow Rate (Nm <sup>3</sup> /h)	Design Airflow Rate (Nm <sup>3</sup> /h)	Maximum Airflow Rate (Nm <sup>3</sup> /h)	Head-Loss (mbar)
WBCB 600	7	30	20-40	80	9,3

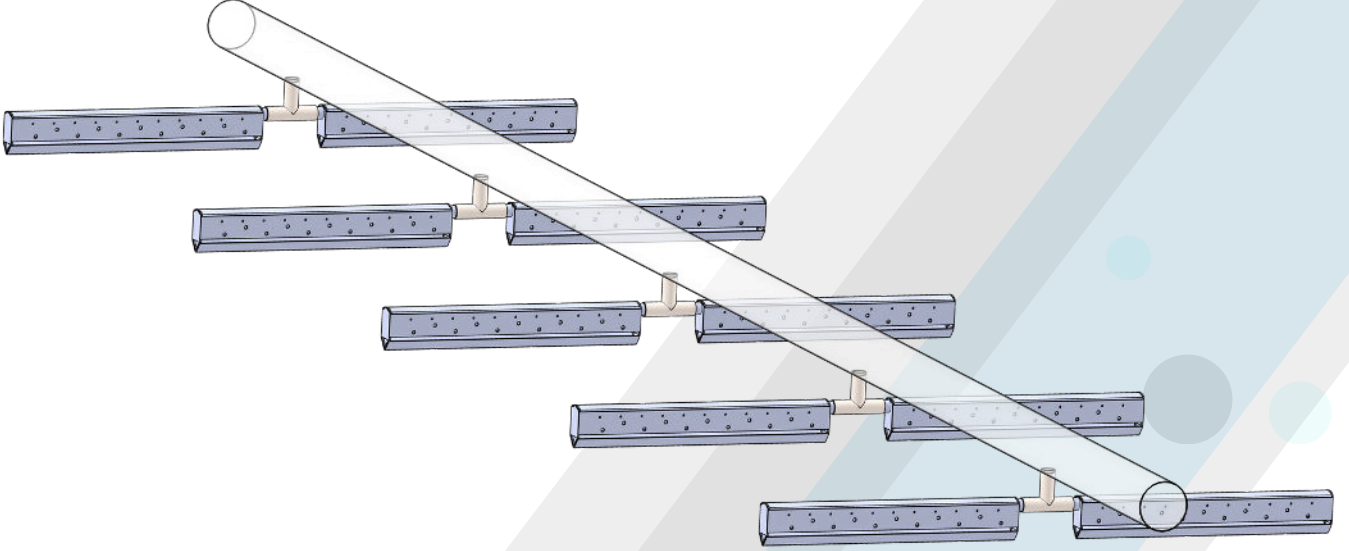
\* Head losses are calculated at nominal airflow and 4m submergence.



\*SOTE values depend on the test tank, diffuser density and water height.

\*SOTE value for 4 meters water height is  $(2.76 \cdot 4) = 11.04$  for 35 Nm<sup>3</sup>/h





GİF PLASTİK SAN. TİC. LTD. STİ.  
KAYAPA MAH. ,NERGİZ(530) CAD. ,NO:7,  
NİLÜFER/BURSA 16130  
TEL : +90 224 443 77 84-85  
MOBILE : +90 541 881 00 40  
FAX : +90 224 243 34 24  
email : info@airox.com.tr



[www.airox.com.tr](http://www.airox.com.tr)